



The Above Home's Properly Planted. This Planting Has Increased the Charm, Beauty, and Value of This Home.



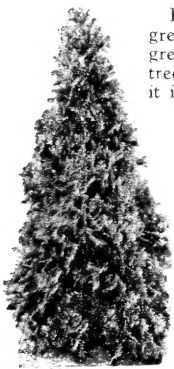
Philadelphus
MINNESOTA SNOWFLAKE
 Plant Patent No. 538
NEW DOUBLE MOCKORANGE

The most valuable and widely accepted shrub introduction of recent years.

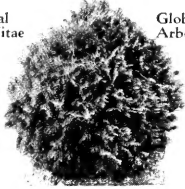
	Each	3 for
18-24 in.	\$1.25	\$3.00
2- 3 ft.	1.50	3.75
3- 4 ft.	2.00	5.00

Bailey's grow their own evergreens. You can be sure the evergreens we grow are hardy. Each tree is Balled in the earth in which it is growing.

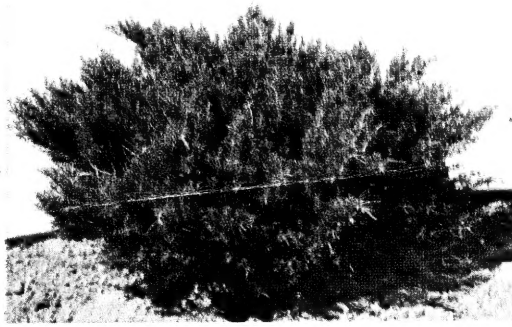
Turn to Inside Page for Full Descriptions of All Evergreens We Offer. Also Prices.



Pyramidal Arbor-Vitae



Globe Arbor-Vitae



SAVIN'S JUNIPER

This dark green spreading evergreen is a very hardy variety for our north country.



GROOTENDORST SUPREME

The red Rose that will bloom all summer, and it needs no winter protection. See other pages for prices and other Rose varieties.



PRUNUS
 ← **TRILOBA**

(Rose Tree of China)

Covered with double pink flowers in early spring. Easy to grow. See prices under Flowering Crab and Plum.



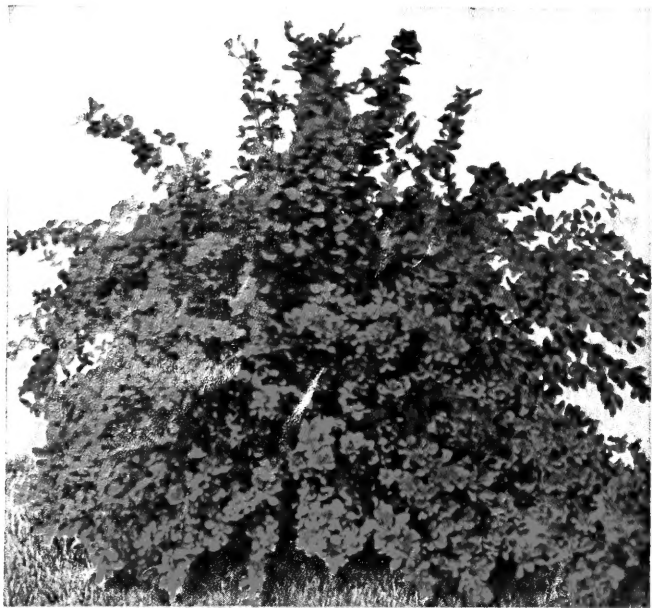
RURAL ROUTE BOX HOLDER
LOCAL

United States National Arboretum
 Washington 25, D. C.

J. V. BAILEY NURSERIES, 1325 Bailey Road, St. Paul 6, Minn.
 Phone GLenview 99744

North Star Cherry

855/6 946/1A



RED-LEAVED BARBERRY

Very charming all season with its flattering bronze-red foliage. Adds that spot of color needed to brighten up the landscape. Must be planted in a sunny location to maintain its rich red coloring. Grows only to a height of 3 feet, but may be pruned to any size or shape desired. See Shrubs for prices.

Plant
This Dwarf
All Summer
Yellow
Blooming
Shrub

POTENTILLA FRUTICOSA

A small, charming, compact growing shrub which is cheerfully brilliant throughout the entire summer and fall. It is closely and densely covered with fern-like leaves, studded with intensely brilliant golden yellow, buttercup-like flowers. A mound of green and gold all season.

12-18 in., \$1.00 each.



Potentilla

CHRYSLER IMPERIAL

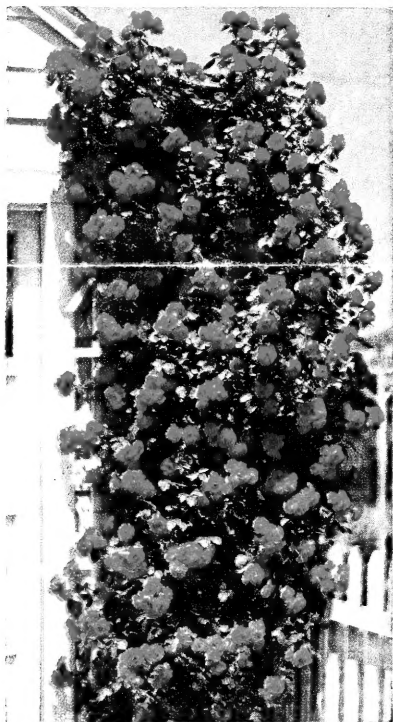


The color is a lively radiant crimson, and the fragrance is abundant and rich. The All-America winner for 1953—a Rose with proved garden performance in all parts of the country. In both the bud and the beautiful big open flower with its 50 or so crisp petals, there is breath-taking beauty of form. You will delight in displaying this in any Rose show or in your home. The plant is vigorous, medium high and symmetrical, branches freely, and is covered with abundant dark green, semi-glossy foliage.

\$2.50 each; 3 or more, \$2.20 each.



Chrysler Imperial (Pat. 1167)



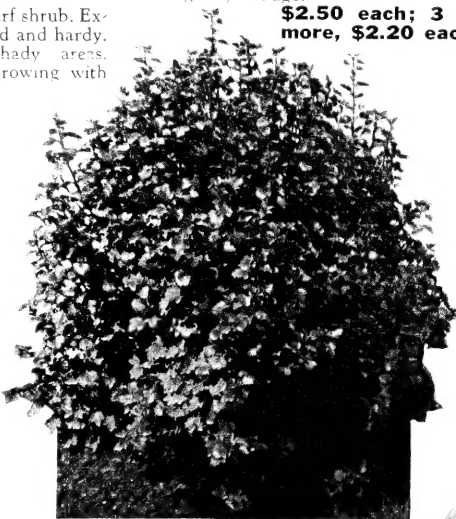
Blaze Climbing Rose

BLAZE

The everblooming form of Paul's Scarlet Climber. Flowers are of the same bright scarlet color that makes an unforgettable picture. **\$1.60 each; 3 or more, \$1.40 each.**

ALPINE CURRANT

A good dwarf shrub. Extremely rugged and hardy. Good for shady areas. Very dense growing with fine, dark green leaves. Flowers are small, yellow, and fragrant, borne in May. Grows to 3 to 4 ft. Ideal for low hedge, as it can be kept trimmed to any height. We offer this fine plant both as a shrub and as a hedge. See inside pages for prices.

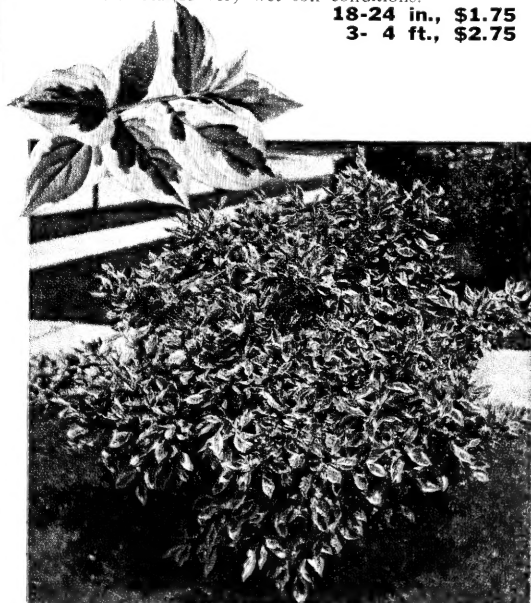


Alpine Currant

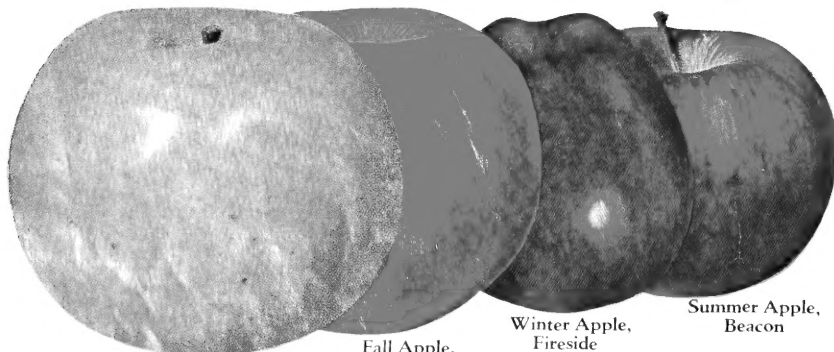
VARIEGATED DOGWOOD (Cornus Elegantissima)

Outstanding accent plant. Leaves deep green in center, with wide border of silvery white. White flowers in early June, followed by attractive white fruits in late summer. Red stems furnish interest in winter. Stands very wet soil conditions.

18-24 in., \$1.75 3- 4 ft., \$2.75



Silver Leaf Variegated Dogwood



Winter Apple, Northwest Greening

Fall Apple, Wealthy

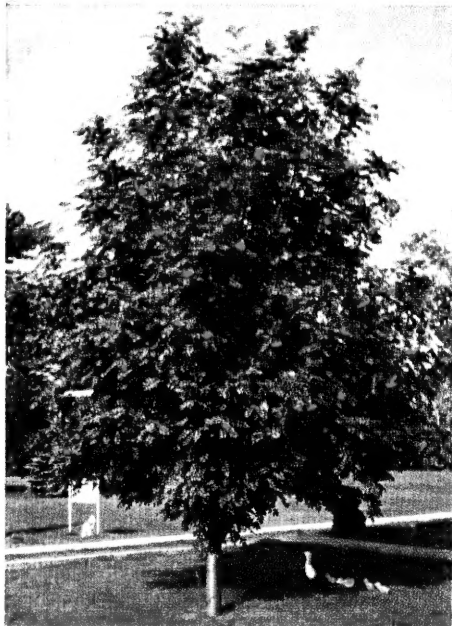
Winter Apple, Fireside

Summer Apple, Beacon

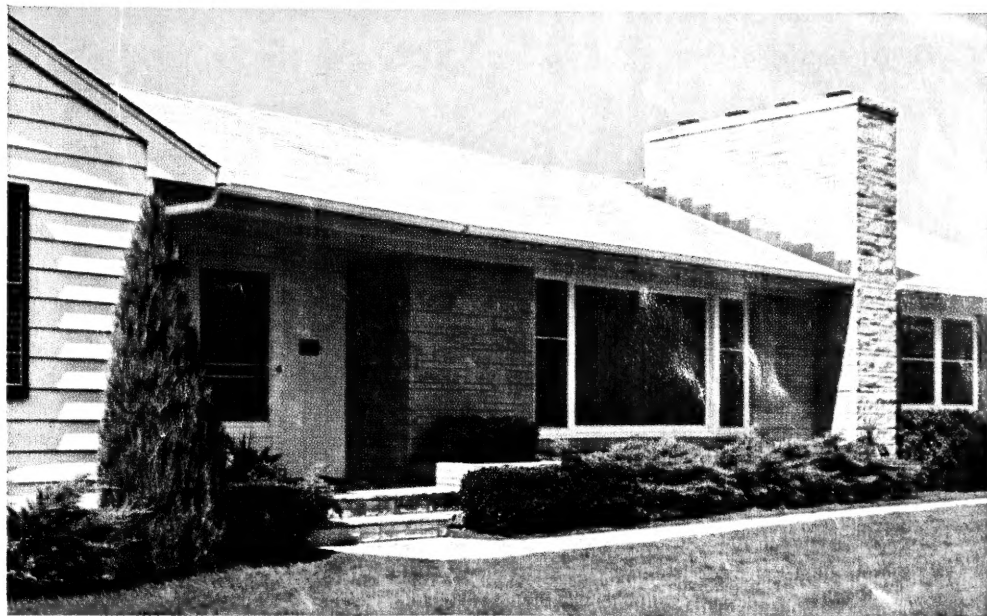
Grow Your Own Fruit
—
4
Choice Varieties

ALL LARGE SIZE TREES

Turn to the inside pages for our offering of more varieties
Prices also other fruit



Mountain Ash



Plant Evergreens for Beauty Throughout the Year

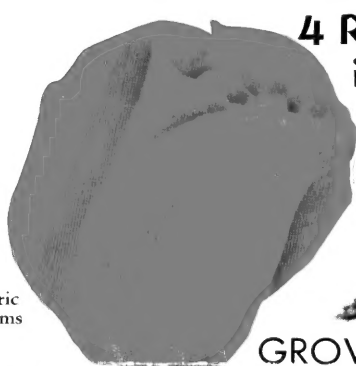


Bleeding Heart

MOUNTAIN ASH

Clusters of flashy, orange-red berries all over the tree in summer and fall. Deep green, clean foliage perfectly implements the graceful, upright habit. Grows to a height of 18 to 25 feet, with a spread of 15 feet maximum. See Shade Trees for prices.

More
ROSES
Offered
on
Inside
Pages



Cedric Adams

4 Roses High in Color



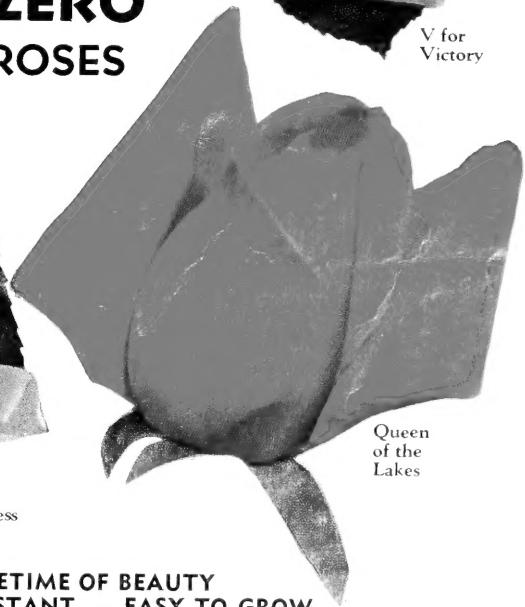
V for Victory

GROW

SUB ZERO ROSES



Pink Princess

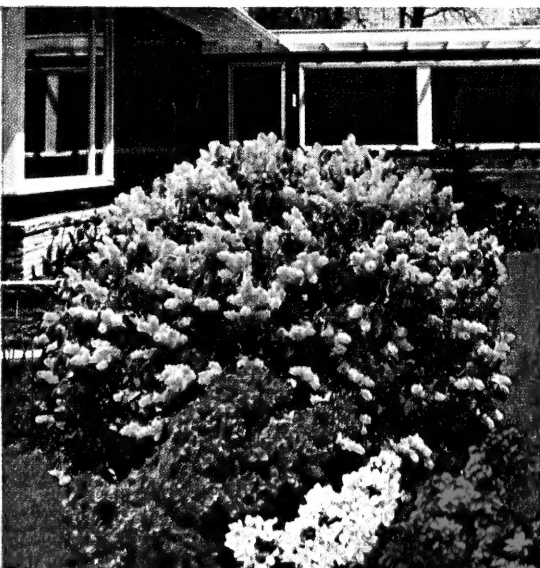


Queen of the Lakes

OLD-FASHIONED BLEEDING HEART

A well known favorite of all. May be used as borders, specimen plants or indoor growing. Produces pink heart-shaped flowers during May, June and July. Will do well in any well drained soil but prefers a sunny location. **85c each; 2 for \$1.50.**

Four Colorful French Lilacs



DOUBLE FLOWERING FRENCH LILACS

- 1—Double Pink, Belle de Nancy
- 2—Double Red, Chas. Joly
- 3—Double White, Mdm. Lemoine
- 4—Double Blue, Alphonse LaValle

18-24 in. size—
\$1.50 each; 4 for \$5.50.
2-3 ft. size—
\$2.50 each; 4 for \$8.50.

A LIFETIME OF BEAUTY DISEASE RESISTANT — EASY TO GROW

Cedric Adams. (Brownell Plant Pat. P. R. R.) Gorgeous long buds open to large, perfectly formed, deep red blooms—often 100 at a time on mature plants!

Pink Princess. (Brownell Plant Pat. No. 459.) Its deep, translucent pink flowers are perfectly shaped. Large, very double flowers, up to 5 inches wide, cover the bush from June right through October until frost.

Queen O' The Lakes. (Brownell Plant Pat. No. 1003.) This is probably the most spectacular of all the new Sub-Zero Roses. The flowers are deep velvety red, up to 5 inches wide, fully double. We can promise you that you never saw any Rose more beautiful.

V for Victory. (Brownell Plant Pat. No. 543.) Large, double, clear yellow flowers that do not fade; fine fragrance. We consider it one of the finest of all yellow Roses; constantly in bloom.

All No. 1 Grade: \$1.75 each; 3 for \$5.00; 5 for \$7.50.
A Mighty Good 2-Yr., Commercial Grade (No. 1½): \$1.50 each; 3 for \$4.25; 5 for \$6.35.

4

2

3

BAILEY'S FOR NURSERY STOCK

BUY DIRECT FROM THE GROWER BY MAIL OR AT THE NURSERY

MAIL ORDER TERMS OF SALE

Payment in full should accompany all orders. Money orders, checks, or bank drafts are the most convenient means of making payments. If you send cash, enclose it in heavy paper and register your letter.

Payment of one-fourth the purchase price in advance and C.O.D. for the balance is acceptable. Please remember that it costs you extra because the Post Office and the Express Company make an additional charge for C.O.D. shipments.

Many of the smaller items can be shipped by Parcel Post at less expense than by express. Include 20% for packing and postage if Parcel Post is desired. Trees over 4 feet in height cannot be sent by mail.

All stock is priced f.o.b. St. Paul or at the nursery.

BAILEY'S GUARANTEE

1. We guarantee our stock to be true to name. If it should prove otherwise, we shall replace it free or refund the amount paid.
2. We guarantee our stock to be of high quality, to have been properly handled, and to reach you in prime condition for planting. Examine it carefully upon arrival; if you are not satisfied, return it at once and we shall replace it or refund your money.
3. Under reasonable conditions our stock should grow. If it fails to grow, we shall replace it at one-half the original price, providing you notify us before October 1, 1957, and include one-half the original purchase price with your letter.
4. We guarantee to do our utmost to give you satisfaction; however, it is agreed that the original purchase price shall be the maximum damages allowed.

Clifford Ecklund is in charge of this Department. Come out and see Clifford for advice on your planting.

BAILEY'S APPLE TREES Leader of Them All

Bailey's Apple trees are 3 years old and varieties found to be best suited to conditions in the North Central states. The trees are grafted on roots grown especially to give you the hardy stock that is needed in this region.

SUMMER APPLES

Beacon. This early Apple was originated at the Minnesota Fruit Breeding Farm. The solid, bright red fruit ripens a few days after Duchess. Excellent quality.

Duchess. An old and proven summer variety of good quality. It is especially favored for sauce and pies. The tree is hardy and productive.

FALL APPLES

McIntosh. An old, accepted variety from Ontario, Canada, that produces a solid, bright red Apple, unusually high in quality for eating.

Wealthy. This Apple has proved itself over the years. Wealthy is still Bailey's leading Apple. The fruit ripens early in September and keeps to Christmas.

WINTER APPLES

Fireside. You will find this large, long-keeping Apple to be one of the highest quality varieties ever developed at the Minnesota Fruit Breeding Farm.

Haralson. This variety is now recognized as the most popular and reliable Apple grown for the home or commercial use in the north central states.

Northwestern Greening. This is the most popular green Apple grown in the North. Tree is large, vigorous, annual bearing.

More Varieties Hardy Apple Trees

(Space does not allow us to describe)

Chestnut Crab	Very good. Eating and pickling
Cortland	Good commercial variety
Lakeland	Very good winter keeper
Mantet	Early, high quality
Minjon	Minnesota Jonathan
Oriole	Ripens in August
Prairie Spy	Choice Minnesota winter variety
RedWell	A red Wealthy. Better keeper
Whitney Crab	Old favorite; one of the best
Dolgo Crab	Also listed with other Flowering Crabs

Prices of All Apple and Crab Apple Trees

	1-4	5-9	10 up
	Each	Each	Each
5 to 7 feet	\$2.25	\$2.10	\$2.00

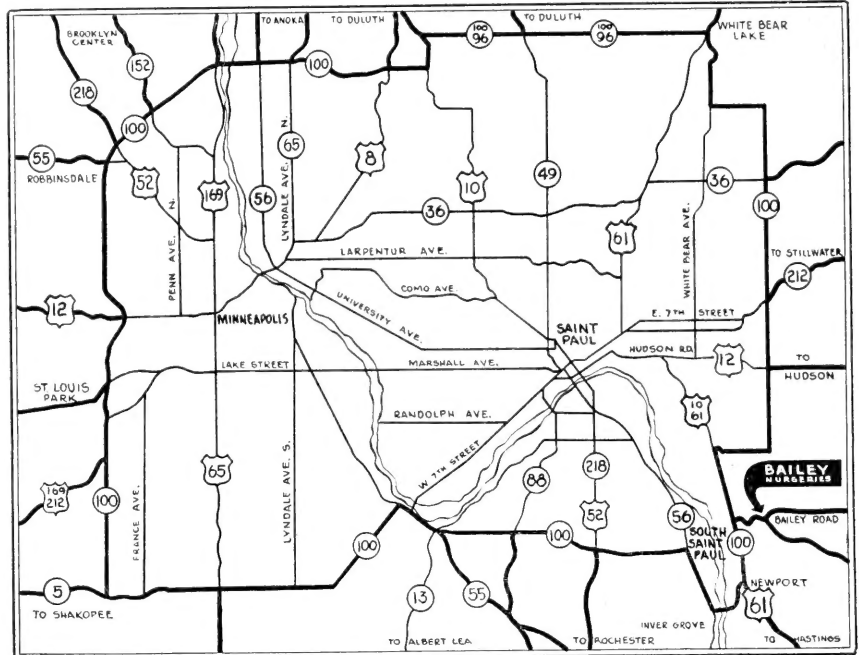
MINNESOTA HARDY PEARS

We grow these varieties of Pears here in the orchard at our nursery. Plant two for pollination.

Patten	Ripens late
Parker	Ripens midseason
	Each
5 to 7 feet	\$2.50
4 to 5 feet	2.00

COME TO SEE US • YOU'RE ALWAYS WELCOME

Our nursery is located just off Highway 61, 10, and 100 at the city limits of St. Paul, across the river from South St. Paul. We invite our customers to come to the nursery to select their stock. We assure you, however, that mail orders will receive our personal attention and your stock will be selected with utmost care.



Fruit from Your Own Garden

PLANT MINNESOTA HARDY PLUMS and CHERRIES

The varieties of Cherry, Plum and Pear offered have been very carefully selected to give you choice fruit throughout a long season.

Opata Cherry. A choice tree and fruit.

Oka Cherry. Very good for cooking and eating.

Sapa Cherry. Small trees. Very productive.

Compass Cherry. A productive tree that is also a pollinizer.

Ember Plum. Large yellow fruit.

Fiebing Prize Plum. A vigorous grower.

Toka. A pollinizer for other Plums.

Superior Plum. Large, bright red fruit.

Underwood Plum. A Minnesota variety.

Monitor. Hardy blue Plum.

	1-4	5-9	10 up
	Each	Each	Each
5 to 7 feet	\$2.50	\$2.35	\$2.25

NORTH STAR and METEOR CHERRY

These first Pie Cherries are hardy, self-fertile and very productive. Introduced by the Minnesota Fruit Breeding Farm. (The North Star variety is semi-dwarf.)

5 to 7 feet	Each
	\$3.50
3 to 4 feet	2.25

RED RASPBERRIES

Chief. A very hardy variety.

Indian Summer. Two crops a year.

Latham. The most popular and widely grown Raspberry in America.

Cumberland Black Raspberry

Prices of All Raspberries			
	12	25	50
	Each	Each	Each
5 to 7 feet	\$2.45	\$4.50	\$8.50
3 to 4 feet			\$14.00

BAILEY'S CHOICE SMALL FRUIT

NEW RED LAKE CURRANT

The most popular Currant for home and market.

2-year, heavy, 60c each; 5 for \$2.75

Pixwell Gooseberry, Choice

2-year, heavy, 90c each; 5 for \$4.25

Grapes, Selected Varieties

Plant about 8 feet apart.

Beta. A very hardy northern Grape.

Concord. Most popular Grape.

2-year, heavy 50c each; 5 for \$2.25

Minnesota Grape Introductions

Choice for eating or canning.

Blue Jay **Red Amber**

Moonbeam (White)

2-yr., heavy, \$1.00 each; 3 for \$2.75

ASPARAGUS,

Mary Washington

The finest Asparagus grown.

Strong plants, 25 for \$1.50; 50 for \$2.50; 100 for \$4.25.

RHUBARB, CHOICE ROOTS

Ruby. This variety yields heavily. The bright red color is excellent for coloring sauce and pies.

Chipman's Canada Red. This variety cannot be surpassed for color. It is the reddest of all Rhubarbs. It is hardy and yields heavily.

Prices of Rhubarb

	Each	Per 5
MacDonald	\$.75	\$3.50
Ruby75	3.50
Chipman's Canada Red.	1.00	4.50

PLANT EVERGREENS for YEAR AROUND BEAUTY

We Offer the Following Arbor-Vitae

American. One of our native trees. It naturally grows in a pyramidal shape. It may attain a height of 40 feet and a spread of 8 to 10 feet, but it can be limited in size by trimming. It grows best in moist locations.

Globe. This dwarf Arbor-Vitae grows to about 3 feet in diameter. The round form is maintained naturally, requires no trimming.

Pyramidal. Here is an Arbor-Vitae that was selected because of its rich green color and slender, erect form. May reach a height of 25 feet. The growth is made more compact by trimming. Used in landscape planting.

Siberian. Because of its extreme hardness, this Arbor-Vitae was named "Siberian." Dark green foliage. It is dense in growth and of conical outline. Can be trimmed to any desired form. If not trimmed it may reach a height of 10 feet.

TALL GROWING JUNIPERS

Dundee. Attractive coloring and compact, pyramidal habit of growth. Throughout the spring and summer it is bluish green, changing to a purplish plum color for fall and winter. Very hardy.

Moffetti. A popular variety of the true Silver Juniper. It is an upright evergreen with attractive light blue foliage. Like most Junipers, it can be trimmed or grown naturally. It is very hardy.

Pathfinder. It is believed that this evergreen has the most beautiful silvery blue coloring of all the varieties of the true Silver Juniper. The habit of growth is more bushy than is found in other varieties of the true Silver. It is hardy.

Red Cedar. Beautiful green pyramidal tree. Ideal tree to use for foundation landscaping or as a specimen tree. Very hardy, a native of the Midwest. They are adapted to our soil and temperature. We also offer Silver Cedar.

Welchi. This very handsome Juniper is one of the more recent grafts of the Silver Juniper. The new growth emphasizes the upright form. It has a deeper blue-green color and a more compact growth than other grafted Silver Junipers. It has proven to be very hardy.

SPREADING JUNIPERS

Pfitzer. It is hardy and does well in a wide variety of soils and exposures. It tolerates partial shade and also does well in full sunlight. It may reach 3 to 4 feet in height and 6 or more feet in diameter; however, it is readily trimmed to desired size. The color is predominantly green. It is extensively used in foundation plantings.

Hetzi. Habit of growth same as Pfitzer. Color is blue-green.

Savin. Heavy branching gives it compactness, and the spreading habit of growth makes it vase-like in outline. Is usually about as tall as it is broad, sometimes reaching a height of 3 feet and diameter of 4 feet. Widely used in foundation plantings.

SPRUCE

Black Hills. A robust appearance is characteristic of this handsome Spruce. It is symmetrical, compact and bushy in habit. It is very hardy and is highly resistant to drought. It will do well on a wide variety of soils. A bluish tinge may be seen in the deep green of the foliage. It may reach a height of 40 to 50 feet.

Colorado Blue. The most popular ornamental Spruce. It has a symmetrical, conical outline. It is hardy and drought resistant. It grows well in a wide variety of conditions. The color ranges from green to powdery blue. Not all trees have the striking blue sheen. The greens and the blues are separated in the price list. The trees may reach a height of 40 feet and a spread of 20 to 25 feet.

PINES

Austrian. This Pine is generally accepted as the best large Pine for use in landscape plantings. It sometimes reaches a height of about 60 feet and a diameter of 40 to 50 feet. It is fast growing and adapts itself to a wide variety of conditions.

Mugho. Here is a low growing, dwarf Pine. It is compact and round in shape. The size can be controlled by trimming. The foliage is deep green. It is hardy and will tolerate some shade.

EVERGREENS for Home Gardeners!

We Also Grow and Offer Bare-root Evergreens

GROW YOUR OWN ORNAMENTAL EVERGREENS

Garden enthusiasts are invited to share in the pleasure of growing Ornamental Evergreens for their own landscape plantings. Home gardeners have found it interesting and profitable. The trees can be cultivated along with the other garden plants. They can be grown until suitable for planting in the permanent landscape.

	1-9 Each	10 up Each
ARBOR-VITAE		
American	18 to 24 in.	\$1.25 \$1.00
Globe	9 to 12 in.	1.25 1.00
Pyramidal	12 to 18 in.	1.50 1.25
Siberian	9 to 12 in.	1.25 1.00
JUNIPER, Spreading		
Andorra	12 to 18 in.	1.50 1.25
Pfitzer (Green)	12 to 18 in.	1.50 1.25
Savin	12 to 18 in.	1.25 1.00
JUNIPER, Pyramidal		
Red Cedar	18 to 24 in.	1.50 1.25

	1-9 Each	10 up Each
PINE		
Austrian	12 to 18 in.	\$1.25 \$1.00
Mugho	8 to 10 in.	1.25 1.00
SPRUCE		
Black Hills	12 to 18 in.	1.50 1.25
Colorado	12 to 18 in.	1.50 1.25
Norway	18 to 24 in.	1.50 1.25

SPECIAL!
25 Assorted Plants at 10 and Up Price.
Your Choice of Varieties.

PLANT A SHELTER BELT for WINTER PROTECTION

Fast Growing Windbreak Trees

STANDARD SHELTER BELT PLAN
(Recommended by the University of Minnesota)

ASH, Green. Dependable shelter belt trees. Fast growing, long lived, drought resistant. Height 60 feet.

ELM, Chinese. Siberian strain of Chinese Elm. Remarkably fast growing. Height 65 feet.

HONEYSUCKLE, Tartarian. It is perfectly hardy. It has red flowers in the spring. Height 10 to 12 feet.

POPLAR, Lombardy. A suitable tree for rows 3 and 5. Quick growing and hardy. Height 60 ft.

PEA TREE, Siberian (Caragana). Withstands drought and is perfectly hardy. Good for snow catch planting. Height 12 to 15 feet.

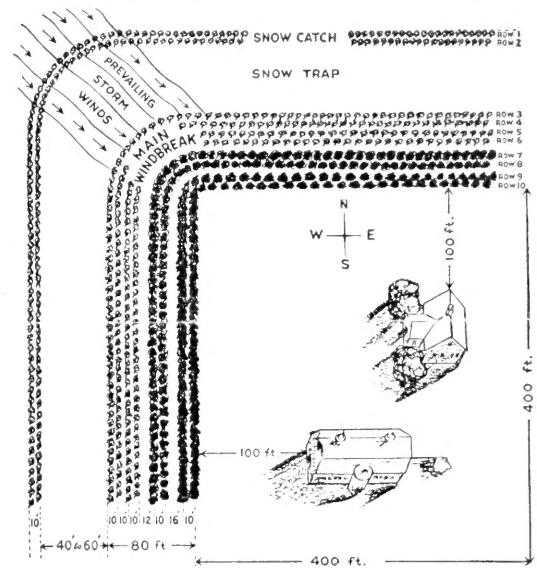
WILLOW, Laurel. The large, shining leaves form an attractive foliage. Height 20 to 25 feet.

WILLOW, Niobe Weeping. Best of the Weeping Willows. Height 40 feet.

SPRUCE, Colorado. See description on this page.

SPRUCE, Black Hills. See description on this page.

PINE, Norway. A very fast grower. Very hardy.



SPACING

All trees and shrubs planted in the shelter belt should be staggered to fill up the gaps and thereby to more effectively check the wind. The spacing between the rows is shown in the plan above. The distances may be extended by 2 to 4 feet in the main windbreaks (rows 3 to 10) if space is available. The trees or shrubs used in the snow catch (rows 1 and 2) should be planted 4 feet apart in the row; all other trees should be planted 6 feet apart in the row. The trees in rows 3 and 5 may be cut for fuel or posts whenever they begin to crowd the more hardy, long-lived trees in rows 4 and 6.

Prices of Evergreens

(Including Baling and Burlapping)

	15-18 in.	18-24 in.	2-2 1/2 ft.	2 1/2-3 ft.	3-3 1/2 ft.	3 1/2-4 ft.	4-5 ft.
ARBOR-VITAE							
American (Dk. Gr.)						\$5.50	\$ 8.00
Globe	5.50	7.00					
Pyramidal	6.00	7.50					
Siberian						7.00	9.00 11.00 14.00
JUNIPER							
Andorra	6.00	7.50					12.00 13.50
Dundee							
Hetzi (Blue Pfitzer)	6.00						
Moffetti						9.50	
Pathfinder						9.50	12.00
Pfitzer	6.00	7.50	9.00				
Savin	6.00	7.50	9.00				
Sutherland							12.00
Welchi						9.50	12.00
PINE							
Mugho, 12-15 in., \$6.00	7.50	9.00					
Austrian						9.00	19.50
SPRUCE							
Black Hills		6.50	8.50	10.00	12.00		
Colo. Shiner		13.50	16.00				35.00
Colo. Blue		10.50	13.00			17.00	25.00
Colo. Green		7.50	9.50	11.50	14.00	17.00	

Evergreen transplants may be set out directly into the windbreak row and cultivated like Corn. Seedling Evergreens should be set in the garden and given care for two years before resetting into permanent windbreak.

Kind	Size	Per 10	Per 50	Per 100
Ash, Green	2-3'	\$1.00	\$3.75	\$ 7.00
Elm, Chinese	3-4'	1.50	6.50	12.00
Honeysuckle, Zabeli	12-18"	2.25	9.00	17.00
	18-24"	2.50	10.50	20.00
Olive, Russian	2-3'	1.50	6.50	12.00
Poplar, Lombardy	2-3'	1.25	5.50	10.00
	3-4'	1.75	8.00	15.00
Siberian Pea Tree (Caragana)	12-18"	1.00	3.50	6.00
	2-3'	1.75	8.00	15.00
Willow, Laurel Leaf	18-24"	1.00	3.50	6.00
	3-4'	1.25	5.50	10.00
Willow, Niobe Weeping	2-3'	1.50	6.50	12.00

WINDBREAK EVERGREENS

(Trans.) indicates Transplants. (Sdgl.) indicates Seedlings.

	Size Sdgl.	Size Trans.	Per 10	Per 25	Per 100
Pine, Norway		9-12"	\$4.50	\$11.00	\$40.00
Spruce, Black Hills	6-8"			2.75	10.00
		6-9"	3.00	6.95	24.95
Spruce, Colorado	6-8"			2.75	10.00
		6-9"	3.00	6.95	24.95

Everblooming Favorites For Your Rose Garden

Bailey's Roses Will Give You Flowers Every Blooming Day

● **Buccaneer.** (Plant Pat. No. 1119.) This introduction for 1953 with its brilliant flowers of rich non-fading yellow will give you plenty of perfect streamlined buds for cutting. **\$2.50 each; 3 or more, \$2.20 each.**

● **Charlotte Armstrong.** H.T. (Plant Pat. No. 455.) The rose-red Rose that glows! Its color and form set it apart from all others—make it a special favorite. Long, slender buds open to large blooms on tall stems. Vigorous, healthy and popular. **\$2.25 each; 3 or more, \$2.00 each.**

● **Frau Karl Druschki.** The purest white Rose. Very double, very large and long lasting. Good stems. Noted for its extreme toughness and vigor. Blooms heavily. **\$1.60 each; 3 or more, \$1.40 each.**

● **Eclipse.** Open blooms are large and well formed. **\$1.60 each; 3 or more, \$1.40 each.**

● **Forty-niner.** (Plant Pat. No. 792.) The colors are so bright and so startling in their contrast that it is hard to believe they could be present in the same flower. **\$2.25 each; 3 or more, \$2.00 each.**

● **Fred Howard.** (Plant Pat. No. 1006.) 1952 AARS winner. A yellow Rose with about 4-inch blooms when fully open and is well filled with 50 or more petals. The ovoid buds are golden yellow tinted light red, as they open they become rich buff-yellow with pinkish shading. Slightly fragrant. **\$2.00 each; 3 or more, \$1.75 each.**

● **Helen Traubel.** (Plant Pat. No. 1028.) Because of its apricot-pink coloring and perfect flowers, fragrance and vigorous plant, you can't help but like this 1952 winner. **\$2.50 each; 3 or more, \$2.20 each.**

● **Kaiserin Auguste Viktoria.** H.T. A cream-white Rose with a faint tinge of lemon at the center of the open bloom. Long, shapely buds. Delightful scent. Very double. Has been called the "classic" white Rose. **\$1.50 each; 3 or more, \$1.30 each.**

● **Mirandy.** (Plant Pat. No. 632.) The huge, 50-petaled, deep crimson flowers open slowly from buds. Aging flowers turn to a deep wine-red color. **\$2.00 each; 3 or more, \$1.75 each.**

● **Mojave.** (Plant Pat. No. 1176.) Dark orange-red color. 20 to 25 petals; sweetly fragrant. The blooms come singly on long, strong stems. Handsome, upright habit and very heavy, leathery foliage. **\$2.75 each; 3 or more, \$2.40 each.**

● **Rex Anderson.** (Plant Pat. No. 335.) The popular large white. Prolific and early bloomer. Long, beautifully formed buds, long stems. **\$1.75 each; 3 or more, \$1.55 each.**

● **Talisman.** Exquisitely formed buds of orange and scarlet; blooms of yellow, cerise and flame; deliciously fragrant. Magnificent grower. **\$1.60 each; 3 or more, \$1.40 each.**

● **Tallyho.** (Plant Pat. No. 828.) All-America winner for 1949. An excellent Rose in a combination of two-tone rose with a touch of red. It is a robust grower, free flowering. **\$2.00 each; 3 or more, \$1.75 each.**

● **Tiffany.** (Plant Pat. No. 1304.) Vigorous with thick mantle of dark green leaves producing long-stemmed buds and perfect blooms of a clear pink with a rich salmon undertone that makes the buds and flower literally glow. Very fragrant. **\$2.75 each; 3 or more, \$2.40 each.**

● **The Doctor.** Silvery pink buds are long and pointed. Uniform color, intensely fragrant. Sturdy bush. **\$1.60 each; 3 or more, \$1.40 each.**

Sub-Zero

MEAN GREATER WINTER HARDINESS

● **Plant Curly Pink.** Matchless in the combination of size and form of bloom, beauty of cluster, bloom quantity, constancy, vigor and foliage, hardiness and performance. Many large, two-toned pink blossoms, in several stages, often form a gorgeous bouquet on a single stem, two or more feet long; over 50 gracefully recurled petals. Ideal Rose for informal hedge and mass plantings.

No. 1 Grade: \$1.75 each; 3 for \$5.00; 5 for \$7.50.

A Mighty Good 2-Yr. Grade (No. 1½): \$1.50 each; 3 for \$4.25; 5 for \$6.35.

JUNE WILL BE "BUSTING OUT ALL OVER" IN RIOTS OF COLOR

PLANT FLORIBUNDA ROSES

These will outbloom anything in the Rose family all summer long.

3 CHOICE FLORIBUNDAS \$1.50 each; 3 or more, \$1.30 each

● **World's Fair.** (Plant Pat. No. 362.) Deep crimson fading to scarlet. Spicy fragrance. Free blooming.

● **White Pinocchio.** (Plant Pat. No. 1010.) New outstanding Floribunda, semi-double flowers of pure white with yellow stamens. 2- to 2½-inch flowers.

● **Yellow Pinocchio.** (Plant Pat. No. 992.) This new member of the Pinocchio family grows 3 feet tall; sturdy bush.

4 MORE CHOICE FLORIBUNDAS \$1.75 each; 3 or more, \$1.55 each

● **Goldilocks.** (Plant Pat. No. 672.) Rich golden yellow; buds shaped like Hybrid Teas. Abundant bloom.

● **Pinocchio.** (Plant Pat. No. 484.) Throughout the season it is covered with immense clusters of perfect little Roses in shades of salmon flushed with gold.

● **Red Pinocchio.** (Plant Pat. No. 812.) A velvety deep red, sometimes with traces of black. Popular in all climates.

● **Valentine.** (Plant Pat. No. 1029.) The Rose that heads the list here at Bailey's. The brightest red you will find and it is just always in bloom.

● **Circus.** (Plant Pat. No. 1382.) This new Floribunda is the only All-America winner for 1955-1956. Circus is truly gay, with its many colors of orange, bright yellow, turning to buff, with a picotee of apple-blossom-pink. The plant is medium low growing; good foliage. Excellent as a border plant. **\$2.50 each; 3 or more, \$2.20 each.**

6 FLORIBUNDAS FOR ALL AMERICA \$2.00 each; 3 or more, \$1.75 each

● **Baby Blaze.** (Plant Pat. No. 1362.) A 1955 introduction which features dark red buds, opening to a rich velvety cherry-red color and only a few shades lighter when fully opened. Does not blue in any stage. Excellent for group plantings, foundation plantings and hedges.

● **Cocorico.** (Plant Pat. No. 1193.) A blazing riot of scarlet or poppy-red blooms that sets any dull garden spot on fire with color. Velvety petals, 5 to 9 broad ones to a bloom, form semi-double flowers 2½ to 3 inches wide. The plant is bushy.

● **Fashion.** (Plant Pat. No. 789.) Brilliant luminous coral flowers overlaid with gold, opening with wavy, graceful petals. All season bloom, large clusters and singly. AARS Award for 1950.

● **Jiminy Cricket.** (Plant Pat. No. 1346.) An All-America winner with urn-shaped tangerine-red buds. The blooms blend orange and vermilion which turn in later stages to a softer coral-pink. It's fragrant and a splendid, free bloomer.

● **Ma Perkins.** (Plant Pat. No. 1143.) 1953 AARS winner. A sparkling new color with rich, unusual fragrance. Each delightfully shaped bud deep salmon-pink with dash of gold flush of red opens into 2- to 2½-inch sparkling, double, soft coral-pink flowers.

● **Vogue.** (Plant Pat. No. 926.) 1952 AARS winner. A wonderful new Floribunda. It is intense cherry-coral with well formed 3- to 4-inch flowers of Hybrid Tea form. The very dark, ovoid buds open slowly to a delightfully fragrant bloom.

TWO STARS IN OUR ALL-AMERICA LINE-UP - - - TWO STARS YOU SHOULD NOT BE WITHOUT!

THE NEW FLORIBUNDA STAR

● **White Bouquet.** (Plant Pat. No. 1415.) Lovely white Floribunda with 4- to 5-inch Gardenia-like blooms. Sweet, spicy fragrance. Golden yellow stamens. Flowers produced both in clusters and individual blooms. Medium sized plant, excellent for bedding or border planting. 1957 AARS Award winner. **\$2.50 each; 3 or more, \$2.20 each.**

THE NEW CLIMBING STAR

● **Golden Showers.** (Plant Pat. Applied For.) Golden Showers is the first winter-hardy everblooming Pillar and Climbing Rose that actually blooms from early spring through to late fall. The buds and flowers are exquisitely shaped, daffodil-yellow, long, pointed buds with fragrant, high-centered, 25- to 30-petaled, 3½- to 4-inch, yellow, open blooms. Almost thornless. 1957 AARS Award winner. **\$3.00 each; 3 or more, \$2.65 each.**

CLIMBING ROSES

● **Blaze.** Pictured on color page. Popular climber with double, scarlet-crimson blooms similar to Paul's Scarlet. **\$1.60 each; 3 or more, \$1.40 each.**

● **New Dawn.** Everblooming. An exceptional climbing Rose that produces a fine display of double flesh-pink blossoms on long stems through June, and as the summer goes along, new buds and flowers continue until frost. **\$1.60 each; 3 or more, \$1.40 each.**

● **Paul's Scarlet.** For brilliant color this Rose is unsurpassed. Produces clusters of semi-double, vivid, dazzling red blossoms. **\$1.60 each; 3 or more, \$1.40 each.**

● **White Dawn.** Strong growing and healthy, this is without doubt the best hardy, everblooming, big-flowered white climbing Rose. The continuous bloom is very free. You'll like it. **\$1.60 each; 3 or more, \$1.40 each.**

RUGOSA ROSE HYBRIDS

From Bailey's northern fields and gardens come these rugged, heavy flowering, shrub-like Roses. These are truly Roses of the North; gardener's neglect and severest winters will not stop their regular blooming and robust habit.

● **Grootendorst Supreme.** Excellent as a hedge. An improved variety having large, fringed, cherry-red flowers borne on a fine, large, well foliaged bush. **Each \$1.25; 3 for \$3.15; doz., \$12.50.**

● **Hansa.** Double, beautiful violet-red flowers of large size, freely produced on a strong, typically Rugosa plant. Hardy and dependable. **Each \$1.25; 3 for \$3.15; doz., \$12.50.**

● **Harrison's Yellow.** Bright yellow, open, semi-double, fragrant flower borne on long stem. Foliage is large, leathery and dark. Very vigorous and strong. **Each \$1.25; 3 for \$3.15; doz., \$12.50.**

● **Pink Grootendorst.** Double flowers of clear pink. Everblooming Baby Rugosa type blooms. **Each \$1.25; 3 for \$3.15; doz., \$12.50.**

Plant FLOWERING SHRUBS for Summer's Bloom

ALMOND, Double Flowering. Early spring flowering shrub. Completely covered with very double, vivid pink blossoms in May.

BARBERRY, Redleaf. Pictured on color page.

BARBERRY, Thunberg. This low shrub is useful in foundation plantings. The bright green leaves turn a brilliant red in autumn, attractive red berries in the fall. Hardy and will tolerate shade.

COTONEASTER, Peking. The leaves are dark and glossy. It is hardy and thrives on poor soils. Also offered in hedging grade. Very desirable.

CRANBERRYBUSH, Highbush. Rich colored foliage; bright red fruit in September.

CURRANT, Alpine. Pictured on color page.

DOGWOOD, Baileyi. Bright red twigged. Height 6 to 8 feet. Very attractive winter color.

DOGWOOD, Variegated. Pictured on color page.

ELDER, Golden. Bright golden yellow leaves mark this shrub throughout the summer. It is hardy.

EUONYMUS alatus (Winged Euonymus). Interesting corky bark. Leaves turning brilliant crimson in autumn. Height 10 to 12 feet.

HONEYSUCKLE, Dwarf (Claveys). A small, compact shrub with gray-green foliage. A good dwarf growing Honeysuckle. Excellent for clipped hedge.

HONEYSUCKLE, Tartarian. Excellent for screens, backgrounds and specimens. Flowers are pink to white, in May. Bright red berries in autumn. Does fairly well in shade. Height to 10 feet.

HONEYSUCKLE, Zabel. An improved strain with bright red blossoms followed by orange berries lasting until frost. Does well in shade. Very hardy.

HYDRANGEA, A.G. (Snowhill). Large clusters of white flowers of this shrub bloom profusely in July. Good shrub to plant in the shade.

HYDRANGEA, Peegee. Immense bloom heads in August and September. When fully developed, flowers turn to pink and bronze.

PRICES OF ORNAMENTAL SHRUBS

	12-18 in.	18-24 in.	2-3 ft.	3-4 ft.
ALMOND, Pink Dbl. Flowering		\$1.25	\$1.75	
BARBERRY, Redleaf	1.10	1.75		
BARBERRY, Thunberg	1.00	1.35		
CRANBERRYBUSH, Highbush			1.75	
COTONEASTER, Peking			1.35	1.75
CURRANT, Alpine (Shrub Grade)	1.00	1.75		
DOGWOOD, Baileyi				1.75
DOGWOOD, Variegated		1.75		2.75
ELDER, Golden			1.50	
EUONYMUS alatus		3.00	4.00	
HONEYSUCKLE, Dwarf	1.25			
HONEYSUCKLE, Tartarian Pink		1.25	1.50	
HONEYSUCKLE, Zabeli		1.25	1.50	
HYDRANGEA, A.G. (Snowhill)		1.50	2.00	
HYDRANGEA, Peegee		1.50	2.00	
LILAC, French Hybrids		1.50	2.50	
LILAC, Common Purple		1.50	1.50	
LILAC, Persian or Rothomagensis		1.50	1.50	
MINNESOTA SNOWFLAKE	1.25	1.50	2.00	
MOCKORANGE, Golden	2.25	3.00		
MOCKORANGE, Virginal			1.50	
NINEBARK, Dwarf		1.00	1.25	
NINEBARK, Golden			1.50	
POTENTILLA fruticosa	1.00			
SNOWBALL			1.75	
SNOWBERRY, Red			1.00	
SNOWBERRY, White			1.00	
SPIREA, Anthony Waterer	1.25	1.50		
SPIREA Froebeli		1.25		
SPIREA Van Houttei (Bridal Wreath)		.75	1.00	
TAMARIX hispida			1.50	
YELLOW FLOWERING CURRANT		1.25		

LILAC, Purple. Old-fashioned old favorite.

LILAC, Persian. Beautiful lavender flowers in May. We also offer Red Persian Lilac Rothomagensis.

MINNESOTA SNOWFLAKE. Pictured on color page.

MOCKORANGE, Golden. Pictured on color page.

MOCKORANGE, Virginal. Large, semi-double flowers produced somewhat throughout the summer. Very fragrant.

NINEBARK, Dwarf. Heavy, dark green foliage. Height 3 to 5 feet. Grows very well in shade.

NINEBARK, Golden. Brilliant yellow foliage. It seldom grows over 6 feet tall; useful in borders, specimen and foundation plantings.

POTENTILLA fruticosa. Pictured on color page.

SNOWBALL. This shrub has stood up well through the years. Its large, round clusters of white flowers are a familiar sight in May and June.

SNOWBERRY, Red. A very fast growing shrub commonly called Coralberry. It does very well in the shade. The flowers are coral-red.

SNOWBERRY, White. Clusters of large, pure white berries are of striking attractiveness from September through winter. It is very hardy and does well in fairly heavy shade.

SPIREA, Anthony Waterer. Masses of crimson flowers appear in July and continue irregularly throughout the summer. It is hardy and does well in shade.

SPIREA Froebeli. Habit of growth same as Spirea Anthony Waterer but stronger. Pink flowers.

SPIREA Van Houttei. Many admirers know this shrub as "Bridal Wreath." The branches are covered with white blossoms in mid-spring. It is useful in shrub borders, foundation plantings and hedges.

TAMARIX hispida. Feathery, bluish gray foliage gives this shrub an unusual airy charm. It bears long panicles of bright pink flowers in July and August.

YELLOW FLOWERING CURRANT (aureum). 8-10 ft. Rapid, upright grower producing fragrant yellow flowers in April-May.

PLANT TREES for COMFORT

BIRCH, Cutleaf Weeping. The drooping branches and the finely cut leaves are attractive. The white bark provides color throughout the year.

BIRCH, White. The white bark and clear yellow leaves in fall provide showy color. Height 60 feet. We also offer Clump White Birch.

ASH, Green. (White.) Height 60 feet.

ASH, Mountain. Pictured on color page.

ELM, American. It is a hardy, long lived tree.

ELM, Lake City. It is distinguished by symmetrical form and rich foliage. A fast growing Elm.

LINDEN. This handsome tree is also known as the Basswood. It is hardy and grows rapidly. Bears clusters of small white and cream colored flowers.

MAPLE, Crimson King. (Plant Pat. No. 735.) Crimson colored leaves throughout the summer.

MAPLE, Norway. A good tree for street or lawn specimen planting where good form and shade are needed. Reaches a height of 60 feet.

MAPLE, Silver. Here is a quick growing Maple that is suited where the more hardy and permanent trees are required. Height 75 to 100 feet.

MAPLE, Schwedler. The leaves are an attractive red during the early part of the summer.

MAPLE, Sugar. This Maple has an oval shape. In fall the leaves turn from a bright green to showy reds and yellows. Height 80 feet.

POPLAR, Lombardy. Here is a suitable tree for planting in rows. It is quick growing and hardy.

POPLAR, Bolleana. A fast growing tree with the Lombardy habit of growth. The leaves are glossy green above and silvery white beneath.

WALNUT, Black (Juglans nigra). This native tree is capable of fairly rapid growth. Edible nuts.

WILLOW, Niobe Weeping. This quick growing tree is the best of the Weeping Willows.

PRICES OF SHADE TREES

Large sizes are listed according to the diameter of the trunk.

	5-6 ft.	6-8 ft.	8-10 ft.	1 1/2-1 3/4 in.	1 3/4-2 in.	2-2 1/2 in.
ASH, Green		\$2.75	\$5.00	\$ 7.50	\$ 9.00	
ASH, Mountain		3.50	5.00	7.50		
BIRCH, Cutleaf Weeping (4-5' \$3.50)		6.50	7.50			
BIRCH, White (4-5' \$1.75)		3.50	4.75			
(column)		7.50				
ELM, American		2.75	4.50	8.00	9.00	11.00
ELM, Lake City		2.75	5.00	8.50	10.00	
LINDEN (Basswood)	3.50	5.00				
LOCUST, Moraine			10.00			
MAPLE, Crimson King (Unbranched 6-7' \$7.50)		14.00				
MAPLE, Norway		6.50	8.00			
MAPLE, Schwedler (1 1/4-1 1/2' \$12.50)		7.50				
(Unbranched 6-7' \$3.50)		3.75				
MAPLE, Soft		6.50	8.00	9.00		12.00
MAPLE, Sugar		2.75	3.50			
POPLAR, Bolleana		1.00	1.50	2.00		
POPLAR, Lombardy			2.75			
WALNUT, Black						
WILLOW, Niobe Weeping		2.75	4.50			

Flowering and Ornamental CRABS and PLUMS

ALMEY. Pictured on color page.

BECHTEL'S DOUBLE FLOWERING CRAB. Beautiful, fragrant, double pink flowers. Each flower is like a pink Camellia. The ideal tree for small yards.

DOLGO CRAB. The beautiful White Flowering Crab. Brilliant red fruits. The fruit is very desirable for jelly.

HOPA CRAB. Beautiful deep red blossoms. The small red fruits remain on the tree until autumn.

STRATHMORE. A new pyramidal Crab with red-dish leaves during the summer and deep pink flowers. The Crab that grows like a Lombardy Poplar.

PRUNUS CISTENA. Leaves are purple and more lasting than many purple-leaf plants.

PRUNUS Triloba. Pictured on color page.

PRICES OF FLOWERING CRABS AND PLUMS

	2-3 ft.	3-4 ft.	4-5 ft.	5-6 ft.
Almey		\$2.50	\$3.00	
Bechtel's		2.50	3.00	
Dolgo				2.25
Hopa			2.50	3.00
Strathmore		3.00		
Prunus:				
Cistena		2.25	3.00	
Triloba		2.25	3.00	

MORE CHOICE FRENCH LILACS

(Pictured on color page)

Bailey's are growing the finest varieties only, with enormous spikes. Choice, select colors.

Belle de Nancy. Dbl. pink.	Mme. Lemoine. Dbl. white.
Chas. Joly. Double red.	Mont Blanc. Single white.
Ludwig Spaeth. Single red.	Pres. Grevy. Double blue.
Michael Buchner. Dbl. pk.	Wm. Robinson. Dbl. red.
18-24 in., \$1.50 each; 4 for \$5.50	
2-3 ft., \$2.50 each; 4 for \$8.50	

GIANT FLOWERING CLEMATIS

Queen of Flowering Vines

The most beautiful of all climbing vines.

Ville de Lyon. A grand shade of bright red that makes a wonderful display. Rapid growing.

President. This beautiful blue Clematis is one of the newest colors. A very good grower.

Jackmani. An old favorite. Large, velvety purple flowers of beauty. Will bloom continuously from July for six to eight weeks.

Mme. de Coultra. The best of the large whites.

All Bailey's Clematis are potted, strong, field-grown plants: \$1.75 each; 3 or more, \$1.60 each

BITTERSWEET. For winter bouquets. Several vines planted close together will fruit more heavily than one.

IVY, Boston. The small, dark green leaves are held close to the wall to form a tight screen. Leaves turn a fine shade of red in autumn.

IVY, Engelmann. This useful climber is a well known vine. The foliage turns a bright scarlet in the fall. The vine is hardy, vigorous and fast growing.

HONEYSUCKLE, Scarlet Trumpet. A very popular climbing vine. Dark green foliage and scarlet flowers throughout the summer.

HONEYSUCKLE, Everblooming. A delightful new vine, fragrant, flame-coral trumpets lined with creamy gold. Blooms abundantly from May until frost. It can be clipped to form a neat hedge, a striking specimen shrub, or allowed to grow naturally to climb a trellis.

PRICES OF STRONG, 2-YEAR-OLD VINES

BITTERSWEET	\$1.00
IVY, Boston	1.25
IVY, Engelmann	1.00
HONEYSUCKLE, Scarlet Trumpet	1.00
HONEYSUCKLE, Everblooming	1.25

PLANT BAILEY HEDGES

Bailey's Hedge Plants should be spaced 12 in. apart excepting for Honeysuckle and Spirea Van Houttei, which may be spaced 2 ft. apart. A single row of plants is enough for a good hedge.

PRICES OF HEDGE PLANTS (Per 100)

	9-12 in.	12-15 in.	12-18 in.	15-18 in.	18-24 in.
BARBERRY, Thunberg (Green Leaf)	\$25.00				
CURRANT, Alpine (Hedging Grade)	47.50	65.00		80.00	
NINEBARK, Dwarf			30.00		55.00
PRIVET, Polish			30.00		40.00

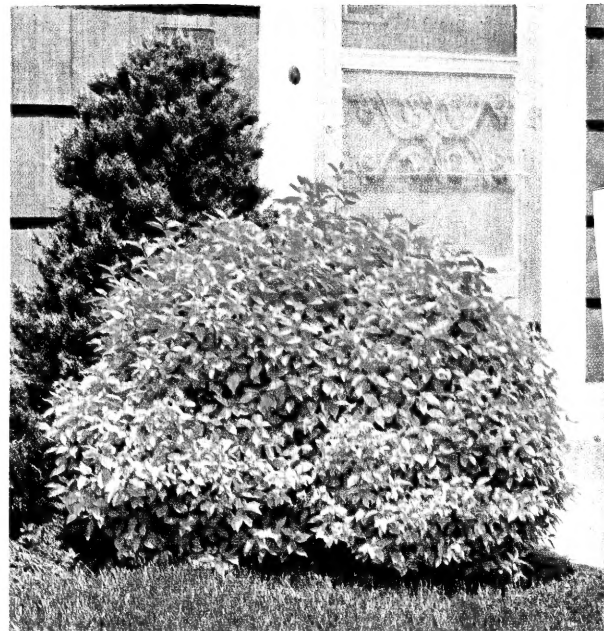


Crimson Glory

GOLDEN MOCK ORANGE

(Philadelphus Coronarius Aurea)

Beautiful, semi-dwarf shrub. A compact mound of bright yellow foliage. In June it is covered with the regular Mock Orange blossoms; fragrant. Combines splendidly with evergreens in foundation plantings. With shrubs such as the Red-Leaf Barberry and Purple-Leaf Plum, it furnishes excellent contrast. Is hardy everywhere. Matured height 4 feet. See Shrubs for prices.



Golden Mock Orange

CRIMSON GLORY

One of the 10 most popular Roses in America. So beautiful and so dependable that it deserves a place in every Rose garden. Beautifully formed blooms of deep, vivid crimson, held proudly on vigorous bushes. Very sweet and refreshing. Voted by far the most fragrant Rose. **\$1.60 each; 3 or more, \$1.40 each.**



Rich Royal Pink Rose QUEEN ELIZABETH

(Plant Pat. 1259.) A new kind of Rose (Grandiflora) which combines the loveliness of the Hybrid Tea with the super-abundance of the Floribunda. It is the first of its kind. Won an All-America Award. Blooms abundantly. Tall (3-4 feet), upright, vigorous.

Ideal for cutting. **\$2.50**

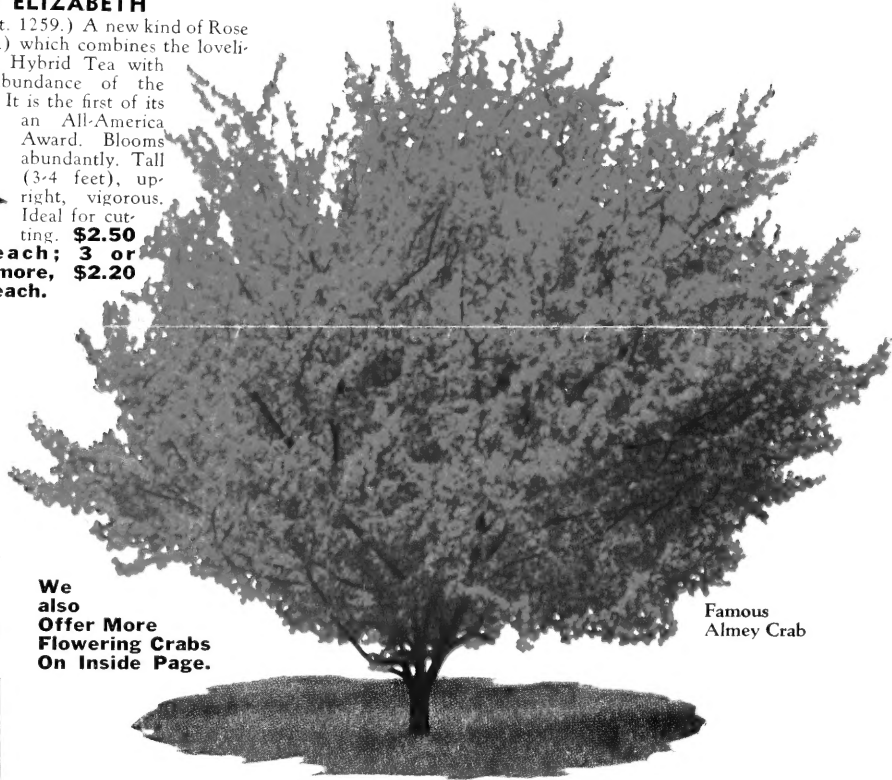
each; 3 or more, \$2.20 each.



Queen Elizabeth
(Plant Pat. No. 1259)

ALMEY CRAB →

The Flowering Crab with dollar-size blooms of a rich, glistening, fiery crimson. White markings at base of each petal give effect of a five-sided star. When in bloom, from a distance, looks like a mass of flame. Blooms young. The most beautiful Flowering Crab tree in America. 4-5 ft., **\$3.00 each; 2 for \$5.75.** 3-4 ft., **\$2.50 each; 2 for \$4.75.**



Famous Almey Crab

We also Offer More Flowering Crabs On Inside Page.



Dwarf Ninebark Hedge

PLANT A HEDGE

DWARF NINEBARK

Makes a beautiful dark green hedge. It grows well in sun or shade. Easy to grow and care for.

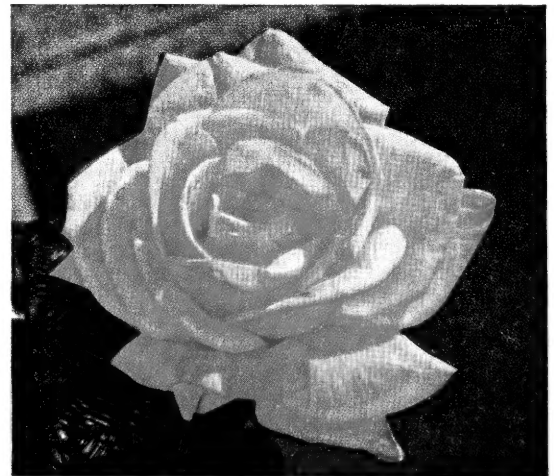
12-18 in. plants, \$30.00 per 100.

18-24 in. plants, \$55.00 per 100.

PEACE

(Plant Pat. No. 591)

The most fabulous Rose in the world. The American Rose Society rate it as the most perfect Rose. It is a "must" for every Rose garden. **\$2.50 each; 3 or more, \$2.20 each.**



Peace (Plant Pat. No. 591)